

## AGENDA

### KENT COMMUNITY SAFETY PARTNERSHIP

**Wednesday, 10th October, 2018, at 10.00 am** Ask for: **Joel Cook/Anna Taylor**  
**Darent Room - Sessions House** Telephone **03000 416892/03000 416478**  
**joel.cook@kent.gov.uk/a**  
**nna.taylor@kent.gov.uk**

*Tea/Coffee will be available 15 minutes before the meeting.*

#### **UNRESTRICTED ITEMS**

*(During these items the meeting is likely to be open to the public)*

#### **A. Committee Business**

- A1 Introduction
- A2 Apologies
- A3 Declarations of Interest
- A4 Notes of meeting held on 18 July 2018 (Pages 3 - 8)

#### **B. Matters for Information/Discussion - Standing Items**

- B1 Kent Community Safety Agreement Update (Pages 9 - 12)
- B2 KCSP Working Group Update (Pages 13 - 16)

#### **C. Matters for Information/Discussion - Adhoc Items**

- C1 Kent Housing Group - Housing Strategy
- C2 Suicide Prevention (Pages 17 - 24)
- C3 Mental Health Update
- C4 Violence Reduction Challenge
- C5 Domestic Abuse and Sexual Violence Executive Group Update (Pages 25 - 35)
- C6 Youth Justice Approach to working with CSPs

#### **D. Matters for Information**

- D1 Date of meetings in 2019/20

Kent Community Safety Partnership meetings to be held on the following dates at 10am in the Medway Room, Sessions House, County Hall.

- 20 March 2019
- 17 July 2019
- 9 October 2019
- 18 March 2020

**E - RESTRICTED ITEM(S)**

Meeting not open to the press and public and reports not for publication

E1 Prevent Duty Delivery Board and Risk Threats and Vulnerabilities Group Updates

E2 Domestic Homicide Reviews (DHRs) - update

**Tuesday, 2 October 2018**

**KENT COUNTY COUNCIL****KENT COMMUNITY SAFETY PARTNERSHIP**

NOTES of a meeting of the Kent Community Safety Partnership held in the Darent Room - Sessions House on Wednesday, 18 July 2018.

PRESENT: Mr P M Hill, OBE (Chairman), Mr Rivers (Vice-Chairman), Ms C Allen, Mr A Bidmead, T/Supt T Cook, Ms D Exall, Ms J Mookherjee, Mr S Peerbux, Mr I Thomson, Mr N Wilkinson, Mr A Harper, Ms J Leney, D/Supt Harper, Mr N Howlett, Mrs A Oates and M Powell

IN ATTENDANCE: Mr J Cook (Scrutiny Research Officer)

**UNRESTRICTED ITEMS****183. Notes of meeting held on 21 March 2018**

*(Item A4)*

RESOLVED that the notes of the meeting held on 21 March 2018 were an accurate record and that they be signed by the Chair.

**184. Kent Community Safety Agreement Update**

*(Item B1)*

1. Shafick Peerbux (Head of Community Safety) explained that the Community Safety Agreement (CSA) had been updated at the start of the financial year as part of a planned refresh and that this had included the addition of a new priority of Preventing Extremism and Hate. He advised that the focus of the CSA was bringing together key joint work on increasingly complex issues. Mr Peerbux explained that the KCSP Working Group had been working on a refresh of the CSA action plan to address the priorities.
2. Shirley Brinson (Community Safety Team Leader) provided an overview of the refreshed action plan, as outlined in the paper, which covered the following priorities:
  - Domestic Abuse
  - Road Safety
  - Substance Misuse
  - Anti-social Behaviour
  - Serious and Organised Crime
  - Safeguarding Vulnerable People
  - Preventing Extremism and Hate
3. Members discussed the update and asked questions regarding domestic abuse issues and Police crime recording.

RESOLVED that the update be noted.

## **185. KCSP Working Group Update**

*(Item B2)*

1. Ian Thomson (Kent Fire and Rescue Service – Assistant Director of Community Safety) provided an update on the Working Group activities. Notably, that the Preventing Extremism and Hate Conference was in the preparation stage with 27 November as the provisional date for the conference. The decision to deliver a partnership conference this year was determined on a needs basis and it was noted that a business case was going to be submitted to the Police and Crime Commissioner to access the tactical pot from this year's Crime Reduction Grant.
2. Mr Thomson explained that the PCC's £40k grant to the KCSP was being well used, with support going to an update of the Kent and Medway Domestic Abuse Services website on a new platform that was more user-friendly. As well as funding being used to support the Licence to Kill project (road safety); a Gangs Project (gangs awareness for frontline professionals and young people); Cybercrime and Online Safety Training (including train the trainer to cascade the information to communities); and a Financial Abuse Video (highlighting the harm to vulnerable adults through scams).
3. The Partnership discussed the business case to the PCC to support the Preventing Extremism and Hate Conference, with suggestions that it include details on how the conference may highlight the Channel referral process.
4. Mr Thomson advised the Partnership that the Kent Community Safety Team (KCST) had been delivering Community Safety Information Sessions throughout the year and partners were encouraged to contact the team to book places and also suggest topics. He also updated the Partnership regarding the Kent Community Safety Newsletter which provided information and positive examples of joint working to tackle a range of community safety issues. Mr Peerbux commented that the sign-up process and current contact lists had been updated in line with GDPR.

RESOLVED that the update be noted.

## **186. KCSP Terms of Reference Reviews**

*(Item B3)*

1. Mr Peerbux advised the Partnership that the updated Terms of Reference (ToR) had incorporated all the KCSP related workstreams and that the ToRs for the subgroups had been reviewed. This update followed a significant review conducted in 2017, so now only minor amendments were required.

RESOLVED that the updated Terms of Reference be agreed, that all KCSP member organisations sign up to the latest Kent & Medway Information Sharing Agreement and that the requirement for an annual review of the ToRs be noted.

### **187. Domestic Abuse and Sexual Violence Executive Group Update**

*(Item C1)*

1. D/Supt Harper advised the Partnership that the Domestic Abuse and Sexual Violence strategy was in development via the executive group. Also, a toolkit for managing this important issue had recently been agreed by Chief Officers.

RESOLVED that the update be noted.

### **188. Operation Engage**

*(Item C2)*

1. Detective Superintendent Susie Harper, (Kent Police) introduced a presentation on the operation. This outlined the key points that it was a multi-agency approach to considering repeat callers who may be at risk. This involved better information sharing between the agencies, which had been a key recommendation from all previous reviews. It had been identified that there was the potential for significant time and cost savings for having a more co-ordinated response and that this could be reinvested into other high vulnerability areas.
2. D/Supt Harper explained that the proposed approach was being considered as a 'community MARAC' (Multi-agency Risk Assessment Conference), using the best practice processes already conducted via normal MARAC operations which focus on the high risk domestic abuse cases. It was expected that this approach would improve communication between services, which had consistently been an area for improvement identified in various case reviews. She advised that it was expected that all areas in Kent would adopt the model to ensure a consistent approach and shared benefit around delivering long term efficiencies and improving the service delivered to those the agencies were seeking to help.
3. Partnership members commented that in some areas, this approach was already up and running, including the development and inclusion of vulnerability panels.

RESOLVED that the update be noted and that the positive approach be welcomed.

### **189. Homelessness Task & Finish Group update**

*(Item C3)*

1. Jess Mookherjee (KCC Public Health), provided a brief update, explaining that work was ongoing, however the commissioning programme had made good progress following successful market engagement and planned commissioning exercises. The commissioning work had lessened the need for the proposed task and finish group at that stage.

RESOLVED that the update be noted and that a written report on the project be provided in future.

### **190. Mental Health Update**

*(Item C4)*

1. Adrian Harper (Office of the Police and Crime Commissioner – Chief Executive) provided an update to the Partnership. He highlighted that the number of

Section 136 detentions under the Mental Health Act had risen and that this had been reviewed. It had been found that Officers were managing this appropriately in terms of the guidelines but that this presented challenges as once an individual was detained under Section 136 they could not be released until they had received a high level medical review. Mr Harper explained that due to the changes under the recent Policing Act and the restrictions on where those detained under the Mental Health act could be held, Officer time was increasingly being spent at hospitals waiting for these detainees to be reviewed or processed.

2. Mr Harper explained that work was taking place to review the legislation around mental health and that this was an important development. He advised that the PCC was part of the review committee looking at this work and that a report was expected later in 2018. Mr Harper also updated the Partnership on the PCC's Mental Health and Policing Fund which had seen more than £107k being given to different organisations.
3. Mr Harper advised the Partnership that Kent Police had continued the practice of having mental health professionals working in the Force Control Room to assist in managing relevant contact. He updated the Partnership that the Street Triage Pilot had ended in June and that a review of the pilot was underway with recommendations expected later in the year.
4. Mr Harper confirmed that processes were in place in Kent Police to monitor and risk assess high risk callers, where mental health is a known factor. He also advised that work was ongoing regarding considering the impact of drugs on mental health issues but noted that more work was needed on this aspect.

RESOLVED that the update be noted.

#### **191. Kent Fire and Rescue Service Update on Community Safety** *(Item C5)*

1. Mr Thomson introduced a presentation developed by KFRS to outline their Community Safety activities. This included covering their Corporate Plan, Business Safety, Home visits, joint working, the Byrnes Family information campaign, volunteering, bike safety and water safety.
2. Key highlights from the presentation involved the positive use of social media, the work of the Medway Water Safety Group and the success of communications and branding. This linked to the plan to license the Byrnes family as a campaign, due to interest from other authorities.
3. It was also highlighted that the excellent engagement from the public with the Byrnes Family campaign has suggested that this approach was worth exploring for other community safety issues.

RESOLVED that the update be noted.

**192. Date of next meeting**

*(Item D1)*

NOTED that the next meeting would be on 10 October 2018 in the Darent Room at County Hall.

**193. Prevent Duty Delivery Board**

*(Item E1)*

1. Please see the ACT (Action Counters Terrorism) [Website](#) for advice and guidance.

RESOLVED that the update be noted.

**194. Domestic Homicide Reviews (DHRs) Update**

*(Item E2)*

RESOLVED that the update be noted.

**195. Kent and Medway Risk Threats and Vulnerabilities Update**

*(Item E3)*

RESOLVED that the update be noted.

**196. Future format of KCSP meetings**

*(Item E4)*

RESOLVED that KCSP meetings continue in the current format.

This page is intentionally left blank



**By:** Shafick Peerbux - Head of Community Safety, KCC  
Shirley Brinson - Community Safety Team Leader, KCC

**To:** Kent Community Safety Partnership – 10th October 2018

**Classification:** For Information

**Subject:** Kent Community Safety Agreement Update

**Summary** This report includes details of progress with regards the Kent Community Safety Agreement action plan and the upcoming strategic assessments

## 1.0 Background

- 1.1 The Crime and Disorder Act 1998 gave statutory responsibility to local authorities (KCC/District/Boroughs), Kent Police and key partners to reduce crime and disorder in their communities. Under this legislation Crime and Disorder Reduction Partnerships (now Community Safety Partnerships) were required to carry out 3 yearly audits and to implement crime reduction strategies. A formal review of the 1998 Act took place in 2006, with the result that three year audits were replaced with annual partnership strategic assessments and rolling partnership plans, whilst in two tier authority areas a statutory County Community Safety Agreement was introduced.

## 2.0 Introduction

- 2.1 The Kent Community Safety Agreement (CSA) outlines the key community safety priorities for the county along with the cross-cutting themes that support the identified priorities. It is a rolling document which is reviewed and refreshed annually with the relevant Chapters and appendices being updated as required. The current version of the CSA received approval from the KCSP members at their meeting in March 2018 with the new priorities and cross-cutting themes taking effect from April 2018.

### Priorities

- Anti-Social Behaviour
- Domestic Abuse
- Substance Misuse
- Safeguarding Vulnerable People
- Serious and Organised Crime
- Preventing Extremism and Hate
- Road Safety

### Cross Cutting Themes

- Early intervention, prevention & education
- Reduce re-offending and support victims
- Improve quality of life and enhance community resilience
- Support mental health and wellbeing

## 3.0 Action Plan and Performance Monitoring

- 3.1 At the last meeting of the KCSP, members were asked to review and approve the refreshed action plan which supports delivery of the CSA priorities. Following the

agreement of the plan the KCSP Working Group is monitoring the activities identified and reviewed the latest updates at their meeting in September 2018.

- 3.2 At this early stage only a couple of the actions from the plan have been completed which include receiving final feedback from two projects which began last year in relation to gangs awareness training for staff and a pilot project supporting adolescents who have lived with domestic abuse. In addition, partners have also completed work on a funding bid to the Home Office from the 'Trusted Relationships Fund' unfortunately although Kent was short-listed we were ultimately unsuccessful. It is hoped that all the work that went into developing the bid will not be completely lost and other funding sources and opportunities are being looked into.
- 3.3 Other ongoing actions that partners are involved in delivering include Domestic Homicide Reviews, Adult Safeguarding Awareness Week, intel based operations, information sharing, conference on preventing extremism and hate and a variety of projects that received funding from the KCSP / Police and Crime Commissioner. Greater detail relating to many of these activities will be covered within other reports that will be presented at the meeting.
- 3.4 In addition to monitoring the action plan the KCSP Working Group also monitors a set of performance indicators chosen to represent the key priorities. At this stage, there are no unexpected results with regards the proxy indicators to be raised with KCSP members. However it is important to note that the Crime and Disorder Scrutiny Committee were interested in looking at the detail around the indicators and therefore ahead of the next planned Scrutiny Committee in April 2019, it is suggested that the KCSP consider the performance indicator data in more detail at its next meeting in March 2019.

#### **4.0 Strategic Assessments**

- 4.1 The Kent Community Safety Team (KCST) has begun work on the annual strategic assessment process. The team is working with statutory partners to source and collate data for use by the district Community Safety Partnership's (CSPs) in their strategic assessments to help identify key community safety issues. This data and the outcomes from the local assessments will help inform the annual review of the CSA priorities.
- 4.2 The time frame for the strategic assessment process is as follows:
  - October - Data requested by the KCST for the most recent year data available and previous 2 years (or whatever is available).
  - October/November - Data submissions received.
  - Mid November to January - Strategic Assessments undertaken by districts.
  - January/February - Draft local CSP priorities shared with the KCST to contribute to the CSA review and refresh.
  - March/April - Strategic Assessment signed off by the district Community Safety Partnership.
- 4.3 The KCST will also be revisiting the use of the MoRiLE risk assessment matrix (*Management of Risk in Law Enforcement*) to help identify the priorities for the CSA along with the PESTELO horizon scanning analysis undertaken by the KCSP Working Group to identify existing or emerging issues and opportunities.

4.4 The outcome of the next strategic assessment process and the review of the CSA priorities and cross-cutting themes will be presented at the next KCSP meeting in 2019.

## **5.0 Next Steps**

5.1 Continued monitoring of the Community Safety Agreement (CSA) Action Plan and Performance Measures, as well as ongoing assessment and identification of any emerging issues.

5.2 Collation of data for the annual strategic assessment process and review of the CSA priorities and cross-cutting themes.

## **6.0 Recommendations**

6.1 The KCSP is asked to:

- note the progress with regard the current Community Safety Agreement.
- request a discussion on performance indicator data ahead of the Crime and Disorder Committee (April 2019)

### **For Further Information:**

Shirley Brinson  
KCC Community Safety Team Leader  
[shirley.brinson@kent.gov.uk](mailto:shirley.brinson@kent.gov.uk)

Shafick Peerbux  
KCC Head of Community Safety  
[shafick.peerbux@kent.gov.uk](mailto:shafick.peerbux@kent.gov.uk)

This page is intentionally left blank

**By:** Ian Thomson - Chair of the KCSP Working Group  
Shafick Peerbux - Head of Community Safety, KCC

**To:** Kent Community Safety Partnership (KCSP) – 10 October 2018

**Classification:** For Information

**Subject:** Kent Community Safety Partnership Working Group Update

---

**Summary** This report provides an update on the key activities and projects being managed on behalf of the Kent Community Safety Partnership by the Working Group.

---

## **1.0 Background / Introduction**

- 1.1 The Crime and Disorder Act 1998 gave statutory responsibility to local authorities, the police, and key partners to reduce crime and disorder in their communities. Under this legislation the responsible authorities were required to form multi-agency 'Crime and Disorder Reduction Partnerships' to undertake this activity. Subsequent revisions introduced additional responsibilities to tackle anti-social behaviour, substance misuse and reduce reoffending and the partnerships were renamed Community Safety Partnerships (CSPs).
- 1.2 The Kent Community Safety Partnership (KCSP) operates at a County level with the overarching purpose to manage the Kent Community Safety Agreement (CSA) on behalf of the responsible authorities in Kent and to deliver safer and stronger communities. The KCSP is supported by a multi-agency working group which has a particular remit to prepare and monitor the Community Safety Agreement including the action plan and performance reports, as well as managing the Kent Community Safety fund on behalf of the governing group.

## **2.0 KCSP Funding – Crime Reduction Grant**

- 2.1 The Kent Police and Crime Commissioner (PCC) allocated £39,661 to the KCSP in 2018/19 to fund pan Kent projects focussing on the priorities identified in the Community Safety Agreement and the Police and Crime Plan. Of that £27,042 was allocated for upfront expenditure and the remainder (£12,619) allocated to the tactical pot. To date £10,750 of the tactical pot has been allocated to delivering a conference (please see section 3) leaving £1,869 still to be allocated.
- 2.2 A number of the projects were asked to seek match funding to the sum of £9,000 enabling the KCSP to set aside sufficient funding within the tactical pot to address emerging issues in-year including the potential to deliver a conference if required.
- 2.3 A summary and update on the current projects are detailed below:
- Cybercrime and Online Safety (£2,912) - The Kent Community Safety Team (KCST) has secured the Cyber Crime Protect Officer from Kent & Essex Serious

Crime Directorate to deliver the 'train the trainer' programme and awareness sessions. The full programme is being devised and training dates will be sent out to partners in due course. However, there is an initial Cybercrime Awareness Session taking place on Tuesday 9<sup>th</sup> October as part of the Safeguarding Adults Awareness Week to highlight this training with partners and encourage them to sign up to the Train the Trainer sessions to disseminate these messages within their organisations and out in the community.

- Domestic Abuse Services Website (£5,000) - The KCST are working with the Domestic Abuse Tactical Group to refresh the current website and a Task & Finish Group has been set up to carry this forward and begin looking at the new website specification and content.
- Licence to Kill (L2K) (£5,000) - The L2K Working Group along with the Casualty Reduction Partnership Group are aiming towards delivery in Feb/March 2019 to allow time to develop the L2K programme. The development aims to provide the best educational value and to support behaviour change for students. This is being assisted by an external consultant and at the time of writing one partnership workshop has already been delivered with a second one planned.
- Financial Abuse Video (£6,000) - This project was partially funded by the KCSP. Additional funding was sought elsewhere by Kent Trading Standards, enabling the project to go ahead. Comments and feedback from the July KCSP meeting regarding this project have been passed to the project lead and a supplier for the video is currently being sourced through a commissioning process.
- Gangs Training (£8,130) - A number of local Community Safety Partnerships (CSPs) have also allocated funding to gangs related training, as such further discussions have taken place to ensure that the proposed project is still fit for purpose and will provide the best support to CSP colleagues across the county without duplicating delivery. Following these discussions the Working Group has agreed to complete delivery of the training which was provided to some districts in 2018/19 and to look into developing a small pilot within schools. If there are any significant changes to the original business case the PCC will be contacted to discuss further.

2.4 As highlighted above a business case was submitted to the PCC to use approximately £10,750 from the tactical pot of the Crime Reduction Grant to deliver a countywide Preventing Extremism and Hate conference for the benefit of partners across Kent and Medway. The Commissioner has approved the use of the funding and is keen that the outcomes of the conference are closely monitored for its wider impact. The Conference Planning Group has been advised of the feedback and the recommendations are being considered as part of the development of the conference.

2.5 It should be noted that feedback on the outcomes from all of the above projects and submission of a business case for 2019/20 must be completed by the 23 January 2019. As such the Working Group will be considering projects for the new financial year as well as the final spend of the current tactical pot at their next meeting on 22<sup>nd</sup> November 2018. Recommendations will then be submitted to the Chair of the KCSP prior to submission to the Office of the Police and Crime Commissioner in January 2019.

### **3.0 Preventing Extremism and Hate Conference**

- 3.1 Following discussions with partners and approval of funding by the PCC the Kent & Medway conference on 'Preventing Extremism and Hate' will be held on Tuesday 27th November 2017 at the Clive Emson Building, Detling Showground between 9:30am – 4:00pm.
- 3.2 The day will be interesting and informative and the conference working group are keen to ensure the most appropriate people attend with either a direct interest in the topic or an ability to influence working practices. Save the date emails have been sent to partners and official invites will be circulated shortly.
- 3.3 The morning session will include a key note speech on the national perspective delivered by Chief Superintendent Nik Adams (National Police lead for Prevent) followed by topics that include the local perspective, refreshed Contest Strategy, Prevent, the Channel process, interventions and case studies. The afternoon session will focus on community cohesion and working together to counteract hate and extremism.
- 3.4 As an integral part of the conference, delegates will be invited to interact with the speakers through the Question and Answer panel sessions and to feedback throughout the day. Delegates will also be expected to cascade learning from the conference within their organisations to ensure as many people as possible can benefit from the event.

### **4.0 Kent Community Safety Team**

- 4.1 The joint Kent Community Safety Team (KCST) helps to support the work of the KCSP, the KCSP Working Group and a variety of multi-agency projects. It consists of Kent Police, Kent Fire and Rescue Service (KFRS) and Kent County Council (KCC) staff.
- 4.2 As part of the KCST's role in sharing good practice and facilitating joint working, members of the KCST deliver Community Safety Information Sessions throughout the year. The last session took place on the 24<sup>th</sup> July at Oakwood House with an identified theme of the Kent and Medway Information Sharing Agreement and the recent General Data Protection Regulations (GDPR). This also included a bespoke segment on Domestic Homicide Reviews (DHRs) to feedback the lessons learnt from three of the most recently published cases for the benefit of KCSP members and other partners. Future information sessions are being planned and partners are encouraged to contact the KCST via [communitysafetyunit@kent.gov.uk](mailto:communitysafetyunit@kent.gov.uk) if they have any suggested topics or would like to present anything to partners.
- 4.3 The fifth edition of the Kent Community Safety Newsletter is due to be published imminently to highlight and promote community safety work across the county. To subscribe to the newsletter or provide any articles for future editions, please contact the KCST via email at [communitysafetyunit@kent.gov.uk](mailto:communitysafetyunit@kent.gov.uk).
- 4.4 The KCST are currently coordinating and delivering a number of events in 2018/19 including the Preventing Extremism and Hate Conference, three Domestic Homicide

Review (DHR) lessons learnt seminars (please see the DHR Update Paper), a number of Cybercrime Train the Trainer and Awareness Sessions and further Community Safety Information Sessions (CSIS).

## **5.0 Recommendations**

- 5.1 The KCSP is asked to note the progress and actions undertaken by the Working Group and the work of the KCST.
- 5.2 The KCSP is also asked to note the submission date for the business case to the Police and Crime Commissioner.

### **For Further Information:**

Ian Thomson  
KFRS, Assistant Director, Community Safety  
[ian.thomson@kent.fire-uk.org](mailto:ian.thomson@kent.fire-uk.org)

Shafick Peerbux  
KCC, Head of Community Safety  
[shafick.peerbux@kent.gov.uk](mailto:shafick.peerbux@kent.gov.uk)



From: **Tim Woodhouse, Suicide Prevention Specialist, Public Health**

To: **Kent Community Safety Partnership (10.10.18)**

Subject: **Suicide Prevention update**

Classification: **Unrestricted**

**Introduction:**

In November 2016, the then Secretary of State for Health Jeremy Hunt wrote to all local authorities highlighting their role in suicide prevention planning and highlighting a national target to reduce the numbers of suicide by 10% by 2020/21.

Kent and Medway has higher than national suicide rates, particularly amongst middle aged men.

KCC has secured £667,978 of external funding for suicide prevention work across Kent and Medway in 2018/19.

**Recommendation(s):**




The Kent Community Safety Partnership (KCSP) is asked to:

- a) Consider how the KCSP may be able to contribute to the delivery of the suicide prevention programme.

**1. Introduction and statistics**

- 1.1 Every suicide is a tragic event which has a devastating impact on the friends and family of the victim, and can be felt across the whole community.
- 1.2 As the latest data published by PHE in November 2017 shows, Kent has higher suicide rates than both the South East region, and England as a whole (Table 1). Rates amongst men are particularly high compared to regional and national levels.

Table 1 – Suicide rate comparison

Indicator	Period	England	South East region	Kent
Suicide: age-standardised rate per 100,000 population (3 year average) (Persons) 	2014 - 16	9.9	9.8	11.6
Suicide: age-standardised rate per 100,000 population (3 year average) (Male) 	2014 - 16	15.3	15.1	18.4
Suicide: age-standardised rate per 100,000 population (3 year average) (Female) 	2014 - 16	4.8	4.8	5.3

Source <http://fingertips.phe.org.uk/profile-group/mental-health/profile/suicide/data#page/0>

1.3 Despite being above the national rate, there was a slight fall in the number of suicides and deaths by undetermined intent (which for statistical purposes are classified as probable suicides) registered by coroners in Kent during 2017 (as shown in Table 2 below).

Table 2

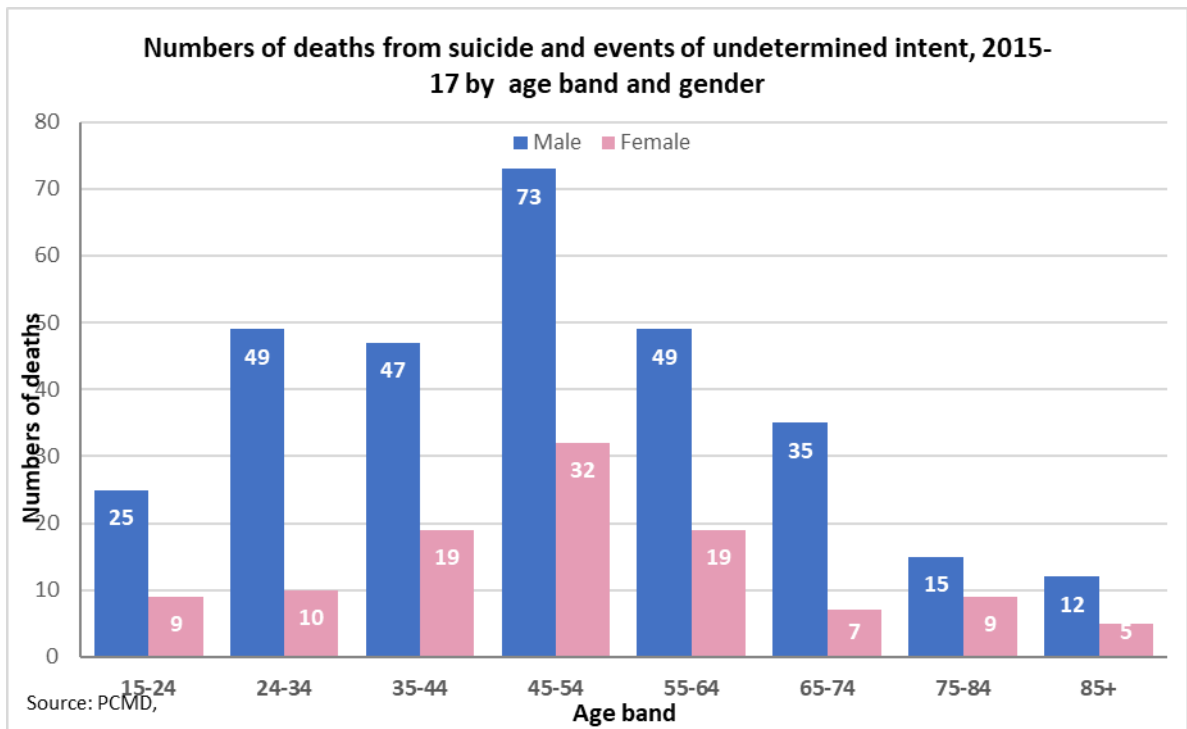
**Numbers of deaths from suicide and events of undetermined intent, 2010-2017 registrations, aged 15+ Kent residents, by gender**

Area resident	Gender	2010	2011	2012	2013	2014	2015	2016	2017	Total
Kent	Male	73	85	97	119	130	116	104	85	<b>809</b>
	Female	27	34	26	31	35	36	36	38	<b>263</b>
	Total	100	119	123	150	165	152	140	123	<b>1072</b>

Source: Primary Care Mortality database, KPHO (JB); Medway Public Health

1.4 Analysis (in Table 3 below) shows that middle aged men are at particular risk.

**Table 3**



1.5 There are also variations across CCG areas within Kent (as shown in Table 4 below).

**Table 4**

**Numbers of deaths and rates from suicide and undetermined causes, Kent CCGs, 2014 -2016 registrations, by gender, - residents aged 15+**

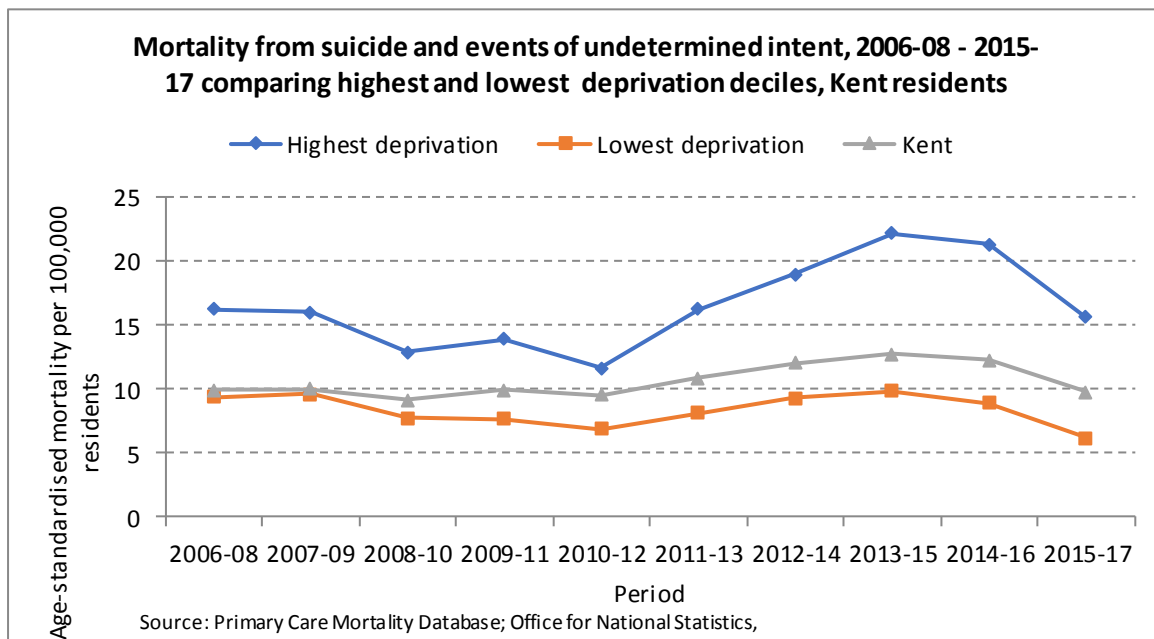
Clinical commissioning group	Male		Female		Both sexes	
	Numbers	ASR / 100,000 <sup>1</sup>	Numbers	ASR / 100,000 <sup>1</sup>	Numbers	ASR / 100,000 <sup>1</sup>
NHS Ashford CCG	28	19.7	4	2.7	32	10.9
NHS Canterbury & Coastal CCG	40	16.4	12	4.7	52	10.5
NHS Dartford, Gravesham & Swanley CCG	63	20.7	8	2.4	71	11.4
NHS South Kent Coast CCG	54	21.1	14	5.5	68	13.0
NHS Swale CCG	33	24.0	9	6.7	42	15.5
NHS Thanet CCG	40	25.7	17	9.4	57	16.8
NHS West Kent	92	16.4	43	7.0	135	11.7

Source: PCMD, KPHO (JB)

<sup>1</sup> - Directly age-standardised mortality rate per 100,000 residents

1.6 There is a correlation between deprivation and higher suicide risk as evidenced in Table 5 below.

**Table 5**



1.7 According to the National Confidential Inquiry into Suicide and Safety in Mental Health Services (hosted by the University of Manchester) in the year before someone dies by suicide, and in relation to their contact with the NHS;

- Around 1/3 have contact with secondary mental health services
- Around 1/3 have contact with primary care only
- Around 1/3 have no contact with the NHS

1.8 National evidence also highlights that both social isolation and substance misuse are both indicators of higher suicide risk.

1.9 The Secretary of State for Health has set a national target for a 10% rate reduction in the rate of suicide by 2020/21. To support this, NHS England has set aside £25m over the next three years. It is from this funding that KCC (on behalf of the Kent and Medway Sustainability and Transformation Partnership) has successfully bid for £667,978 for suicide prevention work within 2018/19. (More details about how this funding will be used can be found later in the Section 3).

**2. 2017 / 18 suicide prevention review**

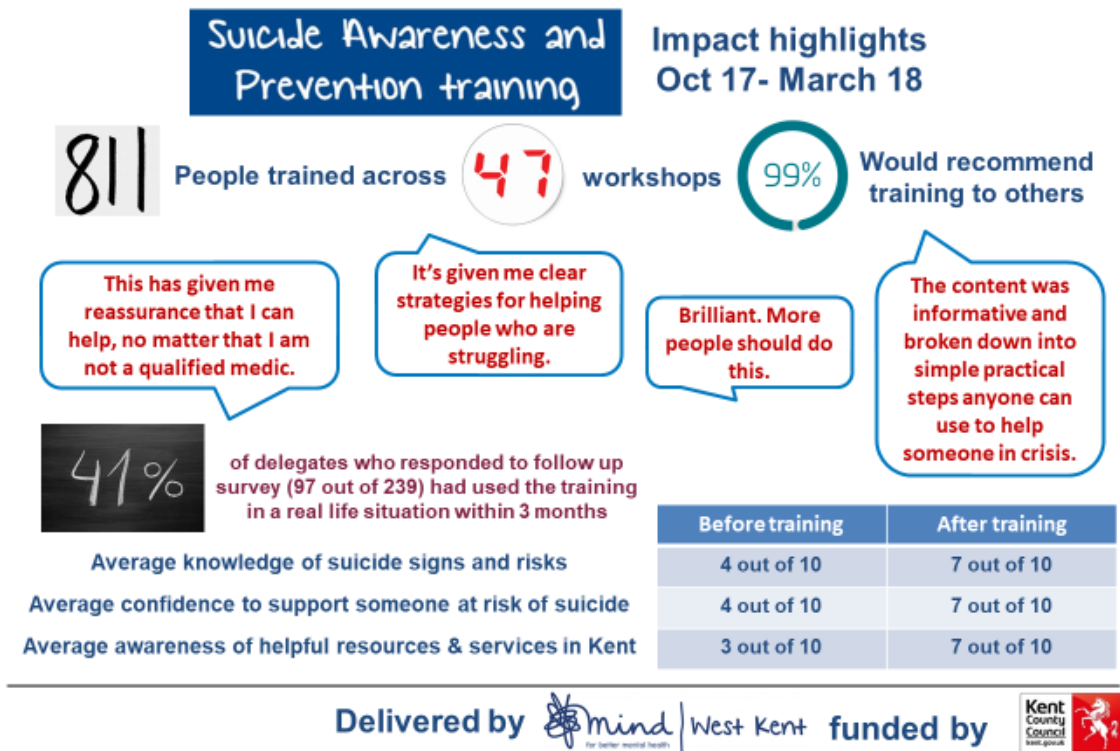
2.1 KCC Public Health led a number of suicide prevention initiatives during 2017/18. These included;

- Continued promotion of the Release the Pressure social marketing campaign and the associated 24/7 freephone support line. Since the start of the campaign (in 2016) there has been an 82% increase in

the number of male callers, and the support line currently receives nearly 2000 calls every month.



- 811 people were trained in Suicide Awareness and Prevention (commissioned by KCC Public Health and delivered by West Kent Mind)



- Working to identify and respond to high risk groups such as children and young people, students, prison populations, victims of domestic abuse and individuals known to secondary mental health services

### 3.0 New NHS England funding

- 3.1 The Kent and Medway STP has been awarded £667,978 for suicide prevention work in 2018/19. It is one of eight STP areas to successfully bid for this funding.
- 3.2 In line with guidance from NHS England, approximately 20% of the funding will go to KMPT (the providers of secondary mental health services in Kent and Medway) to help develop and implement their Zero-Suicide Action Plan which has been requested by the Secretary of State. KMPT will be focusing on key high risk points such as the seven days following discharge from in-patient settings, and after attending A&E departments for self-harm.
- 3.3 The rest of the funding will be go towards community-based prevention and early intervention programmes as outlined by the table below.

Category	Rationale	Detailed proposals
Communications	Given that approximately 2/3rds of people who die by suicide are not known to secondary mental health services, social marketing campaigns are an effective way of raising awareness of available support and encouraging people at risk to seek help.	Extend and further target Release the Pressure.
Training	NICE guidance recommends that health professionals as well as members of the public are trained to recognise suicide warning signs and to learn how to respond when risk is identified.	A range of training will be provided (including 3 hour, 2 day, online) at a range of venues across the county.  Bespoke training for primary care teams will be delivered to GPs and practice staff in their own practices and through Protected Learning Time sessions.  At least 1000 people will receive training during 2018/19.
Workplace interventions	Workplaces offer an opportunity to identify people at risk and highlight the support mechanisms that are available.	Industries such as construction, transport and agriculture will be targeted given their increased risk of suicide.
Innovation fund	Given that nationally there is a lack of evidence about what works within community settings, this fund will allow for innovative ideas to be tested. It is anticipated that effective projects will provide case studies and models of	This innovation fund will provide small grants to local groups to implement new (or extend existing) projects.  It will be open to charities, schools, community groups, parish and district councils, and other organisations.

	practice for other areas to follow.	
Bereavement Support	Improving support for families bereaved by suicide has been identified as a priority in the Kent and Medway Suicide Prevention Strategy.	This funding will allow for current provision to be mapped and measured against national guidance. Recommendations will be developed to ensure high quality, equitable, bereavement support is provided.
Research	Current data sets can provide good quantitative and demographic evidence regarding people who die by suicide. However, they don't provide the detail about why they died. By uncovering more regarding the motivations of people who die, future interventions can be designed more effectively.	This research will include a systematic audit of coroner confirmed suicide cases in Kent and Medway and uncover the motivations of people who die by suicide.  A range of other research methods will also be used to understand the lives and behaviour of individuals in the months before their death in order to uncover opportunities for intervention.
Children and Young People	Tragically deaths by suicide do occur amongst children and young people.  While many of the areas above will help in reducing the risk of suicides amongst young people (eg communications, training, research), the content will be very different when designed with CYP in mind.	Suicide Prevention Training aimed at people working with CYP will be developed.  The Kent Safeguarding Children's Board is currently leading a thematic review of suicides amongst CYP. Public Health will work with them on recommendations following the conclusion of that review

3.4 Each of the above elements will be subject to individually designed evaluation methods, as well as being part of a national evaluation programme being developed by NHE England.

3.5 Alongside this commissioned support, there will also be a programme of collaboration with stakeholders to make changes to the wider health system which will produce short term benefits. (For instance, ensuring that primary care settings are able to identify and better support those individuals who have made previous suicide attempts). To enable this to happen, suicide prevention is fully integrated into the mental health strand of the STP.

#### 4.0 Partnership work to prevent suicides and reduce self harm

4.1 Although very welcome, £667,978 will not eliminate the issue of suicide within Kent and Medway. As a one year funded programme we believe we will be able to make a strong impact in a number of areas, however perhaps even more than the money, is the ability to produce partnerships and relationships which will have a sustained impact for many years to come.

4.2 Public Health already has strong relationships with a range of external partners (including Kent Police, KFRS, Network Rail, Samaritans, MIND, KMPT etc) however we would like to take this opportunity to discuss with the Kent Community Safety Partnership and explore whether there is more that can be done collectively.

## 5. Recommendation(s)

### Recommendation(s):

The Kent Community Safety Partnership (KCSP) is asked to:

- a) Consider how the KCSP may be able to contribute to the delivery of the suicide prevention programme.

### Report Author

- Tim Woodhouse, Suicide Prevention Specialist, Public Health
- +44 3000 416857 [tim.woodhouse@kent.gov.uk](mailto:tim.woodhouse@kent.gov.uk)
  
- Jess Mookherjee, Public Health Consultant
- +44 3000 416493 [Jessica.mookherjee@kent.gov.uk](mailto:Jessica.mookherjee@kent.gov.uk)

### Relevant Director

- Andrew Scott-Clark, Director of Public Health
- +44 3000 416659 [Andrew.scott-clark@kent.gov.uk](mailto:Andrew.scott-clark@kent.gov.uk)



**By:** D/Supt Susie Harper, Kent Police

**To:** Kent Community Safety Partnership (KCSP) – 10 October 2018

**Classification:** For Information

**Subject:** Domestic Abuse and Sexual Violence Executive Group Update

**Summary** This report provides an update on the Domestic Abuse and Sexual Violence Strategy.

## 1.0 Domestic Abuse and Sexual Violence Executive Group

- 1.1 The domestic abuse strategy has been prepared and accompanies this paper (see Appendix 1). This has been circulated to the executive group. The members have been asked to highlight what their main objectives are for their agency and this will form part of a wider action plan.
- 1.2 This consultation ended on the 28th September and the results are being collated. The strategy still needs to be finalised. To assist with this the role of Domestic Abuse Manager is in the process of being created. The purpose of this role is to support the executive group in particular regarding the strategy and objectives set.
- 1.3 Kent Police have highlighted the following:

- **Pursue perpetrators and reduce re-offending**

We will do this by ensuring swifter sanctions against perpetrators and intervention opportunities through perpetrator programmes

- **Work to prevent domestic abuse**

To develop a bespoke process for the management of women and girls, both new initiatives and within existing structures. The aim will be to work in a holistic and multi-agency way to divert women and girls from custody

Work collaboratively with partners to ensure children are kept safe and receive support at the earliest opportunity ( Operation Encompass)

Op Encompass will be rolled out in Medway after Autumn half term. Kent Police will be holding briefing sessions on Op Encompass and the roll out will be staged. There is on-going discussion with KCC Education on how this could be achieved across Kent which has significantly more schools.

Kent Police are working with HeadStart and have arrangements with them regarding notifications to schools who they are working with across Kent.

## **2. Domestic Abuse Best Frame Work**

- 2.1 This is a national project that is being governed and implemented via the National Criminal Justice Board. A National Delivery board has been set up which includes the DA national Police lead and partners including CPS, HMCTS and third sector.
- 2.2 The framework has been produced as a result of a pilot run in three low performing magistrate court areas, these included Nottingham, Highbury and Bradford. They were selected because the DA outcomes were poor i.e. high volume DA cases going to court, but low outcome and conviction rate. As a result of the pilot they saw an increase in performance outcomes.
- 2.3 The key components of the framework are:
  1. Clear Multi agency approach
  2. IDVA support
  3. Trained and consistently employed staff across all services
  4. In court services appropriate use of special measures; appropriate support at court.
- 2.4 The official launch date was the 26<sup>th</sup> September. All areas have until January to have an action plan in place, and then monitoring will take effect from January 2019. It has been agreed that this will be through the Criminal Justice Board

## **3. Medway joint targeted area inspection (JTAI)**

- 3.1 As a consequence of the JTAI there is an action plan on the matters that have been identified and also a formal response to Ofsted on their findings. Any changes identified as affecting Kent Police will be dealt with across the county and not just for Medway.

## **4. Kent Police DA risk assessment algorithm**

- 4.1 This is in early development and there is on-going work to identify if there are any gaps in the service for the low risk cases. Some 58% victims and 56% of suspects identified in the algorithm (15 yrs worth of data) have never returned to Kent Police requiring an intervention, but other services may need to be working with them. The work continues on this tool, which has support from NPCC and CoP<sup>1</sup>. It is now essential that as partner agencies we all assist in providing Kent Police with what the service delivery looks like for those families who are low risk and what support there is in place for them to be signposted to. If there are identified gaps, then this will need to be considered moving forward in commissioning of services.

---

<sup>1</sup> National Police Chief Council, College of Policing.

## **5.0 Recommendations**

- 5.1 The KCSP is asked to note the progress and actions undertaken by the DA and Sexual Violence Executive Group.

### **Attachments:**

**Appendix 1:** Domestic Abuse and Sexual Violence Strategy

### **For Further Information:**

D/Supt Susie Harper

Kent Police

[susie.harper@kent.pnn.police.uk](mailto:susie.harper@kent.pnn.police.uk)

This page is intentionally left blank

# **Kent and Medway Domestic Abuse and Sexual Violence Executive Group**

## **Statement of Purpose**

This strategy is constructed around five key strands. Each strand has an identified “outcome” which is designed to contribute to the overall vision of the Kent and Medway Domestic Abuse and Sexual Violence Executive Group. A number of “priorities” are identified within each strand. These priorities should form the basis for the development of future Action Plans.

Within this plan it is essential that all agencies recognise that domestic abuse includes intimate and non- intimate relationships. This group uses the government defined definition of domestic abuse.

Definitions:

A new criminal offence was introduced on the 29th December 2015 of ‘Controlling or Coercive Behaviour in an intimate or family relationship’, which complements existing legislation and closes the gap in law around patterns of controlling or coercive behaviour. The cross Government definition is as follows :

*Domestic abuse ‘Any incident or pattern of incidents of controlling, coercive, threatening behaviour, violence or abuse between those aged 16 or over who are, or have been, intimate partners or family members regardless of gender or sexuality’ The abuse can encompass, but is not limited to: Psychological; physical; sexual; financial and emotional*

### *Controlling Behaviour*

*Controlling behaviour is a range of acts designed to make a person subordinate and/or dependent by isolating them from sources of support, exploiting their resources and capacities for personal gain, depriving them of the means needed for independence, resistance and escape, and regulating their everyday behaviour.*

### *Coercive behaviour*

*Coercive behaviour is an act or a pattern of acts of assault, threats, humiliation and intimidation or other abuse that is used by a person to harm, punish, or frighten their victim.*

Sexual violence and abuse is defined as *any behaviour of a sexual nature which is unwanted and takes place without consent or understanding.*

## **1. Driving Change**

This strand focuses on collaborative working and promoting a more cohesive approach to tackling domestic and sexual violence and abuse. The strand acknowledges that more can always be done to promote integrated working across all sectors.

*Driving Change Outcome - The DASV Executive Group will continue to recognise the adverse impact of domestic and sexual violence and abuse on society, and the need to promote change through leadership and partnership working.*

## **2. Prevention and Early Intervention**

This strand focuses primarily on prevention - that is aimed at preventing domestic and sexual violence and abuse from happening, so that early intervention and prevention, not crisis response, is the norm. We will ensure that victims get the help they need when they need it. This needs a collaborative response by all agencies and effective support must also make the links to targeting wider vulnerability such as child exploitation, FGM, gangs and substance misuse. This will be achieved through promoting better knowledge and understanding of violence and abuse, promoting healthy relationships, changing behaviours and attitudes in our society towards violence, and early intervention for those at risk of harm - such as vulnerable individuals, children and older people. It will focus heavily on the risk posed by perpetrators and ensure there are robust services in place to manage that risk.

*Prevention and Early Intervention Outcome – Reduce the incidence of domestic and sexual violence and abuse through, effective preventative educational programmes, a skilled and resourced workforce and promotion of a culture of prevention, and earlier intervention at societal, governmental and local levels.*

## **3. Provision of services**

This strand focuses on preventing further violence and abuse of those victims and families who are at risk of the violence. All agencies should work together to build more responsive services for those who need them. This is not just about statutory or community services but about everyone knowing their roles and responsibilities – from family members and co-workers, to professionals, community workers and faith leaders being able to recognise signs and symptoms and being able to access information and advice to assist individuals. To achieve this requires a greater focus on training, and expertise, as well as further development of specialist services. Safety planning, following disclosure of violence, is an integral part of this Strand.

*Provision of Services Outcome – Responsive services for individuals and/or groups at risk of, or subject to, domestic and sexual violence and abuse and its reoccurrence.*

## **4. Partnership Working**

This strand reflects the provision of additional support for those who have been victims of domestic and/or sexual violence and abuse through better partnership working. It is about the support needed to come to terms with what has happened and to manage the longer term consequences of violence and abuse. Support comes in many forms and can include educational support services, housing support, outreach and advocacy services and improving access to more specialist psychological interventions.

*Partnership Working Outcome – Provision of appropriate support services that promotes equality of access and positive outcomes for all victims of domestic and sexual violence and abuse. Ensuring that lessons from domestic homicide reviews are learnt and that agencies work cohesively together*

## **5. Pursuing Perpetrators**

This strand focuses on continually improving protections and justice available. Ensuring that victims of violence and their families are protected from harm; this can include civil and criminal justice outcomes. All agencies should recognise that the harmful and violent behaviour of perpetrators needs to be addressed. Through supporting interventions that lead to sustainable behaviour change in perpetrators themselves, we will drive an overall reduction in prevalence of domestic abuse and sexual violence crimes and reduced rates of re-offending.

*Pursuing Offenders Outcome – Provision of effective, engaged, supportive, responsive and timely protection and justice in relation to domestic and sexual violence and abuse.*

## **Our Priorities**

We have identified priority areas for taking the Strategy forward. They will underpin the development of Action Plans within the life of this Strategy.

Our Aim is to ensure efficient and effective governance and accountability throughout the implementation of the Strategy.

This Strategy will be supported by the development of Action Plans by key stakeholders across the statutory, voluntary and community sectors. Implementation of the priorities will not be an easy task, and will require sustained commitment from all if we are to continue to make a significant difference to the lives of victims of domestic and sexual violence and abuse.

Data should be collated from each agency on how they are delivering against these strands. Each agency should ensure that they have effective inspection mechanisms. The monitoring of progress of this strategy will be the responsibility of the Kent and Medway Domestic and Sexual Violence Executive Strategy Group. This group will provide annual monitoring reports to the safeguarding boards setting out progress against delivery objectives.

## **Driving Change**

1. All agencies reaffirm their commitment to working together and in partnership with other organisations to continue to promote societal change in attitudes and in the provision of services, support and justice for victims, witnesses, children of domestic and sexual violence and abuse.

2. The Domestic Abuse and Sexual Violence Executive Group will provide governance through leadership and strategic direction to drive this strategy. The Kent and Medway Domestic and Sexual Violence Executive Strategy Group will continue to be chaired by Assistant Chief Constable and vice-chair Senior Executive KCC Katie Stewart

3. Stakeholders will ensure that effective records management systems and information conduits are established and maintained in order to ensure data protection and the sharing of appropriate and necessary information across statutory bodies.

### **Prevention and Early Intervention**

4. All departments will work together to consider how best to establish a baseline on societal attitudes to domestic and sexual violence and abuse. The strategic assessment will set out the baseline and areas for improvement.

5. An integrated Information Plan will be developed to promote and encourage an understanding and recognition of domestic and sexual violence and abuse among the general public and specific audiences.

6. All departments and agencies will work together to highlight the interrelationship between domestic and sexual violence and abuse, substance misuse (alcohol/drug abuse), and poor mental health.

7. All agencies will ensure that their workforce will have the necessary skills to identify those at risk and ensure that their staff are equipped to recognise signs of those affected by abuse including child abuse, and domestic and sexual violence and abuse and sex and healthy relationships<sup>1</sup>.

8. All agencies will work together to promote preventative safeguarding for all those at risk of harm.

9. Through education victims, perpetrators and those affected by abuse will understand healthy relationships.

10 All agencies will work with the Safeguarding Boards, Community Safety Partnerships and the Children's and Young People's Strategic Partnership (CYPSP) to prevent domestic and sexual violence and abuse from occurring.

11. Each agency recognises that it is everyone's business to prevent abuse from occurring. All agencies should work together to prevent incidents of abuse from occurring. This should include developing plans for perpetrator intervention to divert or intervene, where a criminal justice sanction has not been achieved.

12. All agencies will work together to ensure that there is a robust approach to perpetrators. This will include understanding the behaviour of the perpetrator, supporting interventions that

---

<sup>1</sup> <https://www.tes.com/news/school-news/sex-and-relationships-education>



lead to sustainable behaviour change in perpetrators themselves and having a clear plan to bring them to justice<sup>2</sup> or divert from offending.

13. All agencies will work together to identify those perpetrators most at risk of reoffending and ensure there are robust procedures in place to support and prevent reoffending, and ensure that partners, children and family members are supported and included in these programmes and their voice is heard.

### **Provision of services**

14. The Domestic Abuse and Sexual Violence Executive Group will ensure the ongoing monitoring of the service provision across the County to ensure that all victims, their families, children and perpetrators are able to access support. Any gaps in provision will be monitored and the members will work in partnership with commissioning bodies and providers to address these.

15. The development of a safety plan will be an integral part of the pathways approach to domestic and sexual violence and abuse for children, young people and adults, in order to support individuals (and families) through the immediate and longer term consequences of violence and abuse.

16. The provision of information on available services will be reviewed to take account of the development of an integrated pathways approach to tackling domestic and sexual violence and abuse, and the diversity and emerging needs of client groups.

17. Through the Domestic and Sexual Violence Executive Group, a multi-agency evidence-based standards and/or guidance will be taken into account to inform the commissioning of domestic and sexual abuse services.

18. The commissioning and provision of services will be informed by the views of those who have been affected by domestic and sexual violence and abuse, or are at significant risk of it.

19. A map of the provision of services to be produced to identify any gaps so that agencies can be confident that they can support all diverse vulnerable groups and support the implementation of this strategy.

20. Appropriate partnership networks will be in place to increase multi-agency recognition and responses to domestic and sexual violence and abuse.

21. Further work will be completed to ensure that the delivery of local Multi Agency Risk Assessment Conferences, MARACs, are maximised, to reduce repeat victimisation or death for victims at high risk of domestic violence and abuse.

---

<sup>2</sup> <https://www.gov.uk/government/publications/violence-against-women-and-girls-national-statement-of-expectations>

22. The services provided by Beech House, Sexual Assault Referral Centre, (SARC), will be reviewed in 2018 to incorporate the views of service users, potential changes in demand and evolving evidence on effectiveness.

23. There will be a renewed emphasis on awareness training, on how to recognise, disclose and seek help for victims of domestic and sexual violence and abuse, in line with recognised standards.

24. All agencies to ensure that included within any awareness training that staff are able to identify those at risk of offending and the identified pathways.

### **Partnership working**

25. Victims of domestic and sexual violence and abuse will be provided with the appropriate outreach and advisory services.

26. Stakeholders will review and evaluate the provision of emergency housing support based on emerging and complex needs.

27. The emotional and psychological needs of individuals who have suffered as a result of violence and abuse will be recognised and addressed in order to improve outcomes. In particular the psychological impact of coercion and control.

28. All agencies to ensure they participate in DHR process when required and that any learning is provided to the wider workforce.

29. Agencies to ensure that they are aware of the links to each different area of business such as MAPPA, Integrated Offender management, Local Criminal Justice board, MARAC and troubled families so that they can work cohesively.

### **Pursuing Perpetrators**

30. Focused protection, support and information will be available for all victims throughout the Criminal Justice System process. All agencies should ensure that the victim's voice is heard throughout these processes.

31. Ongoing assessment of the capacity of the Justice System to respond to current, new and emerging issues will be undertaken in relation to the protection of victims.

32. Continue to develop and deliver practices and interventions, based on best practice, to effectively address harmful, violent and abusive behaviour.

33. Ongoing assessment of the capacity of the justice system to respond to current, new and emerging issues will be undertaken in relation to responding to harmful and violent behaviour and provide greater focus on changing the behaviour of the perpetrator through a combination of disruption, support and the management of offenders.

### **Key Objectives**

Through the recent consultation regarding key objectives (there were two responses: Swale Council and Kent Police) , agencies would like to focus on

### **Provision of Service**

1. There will be a renewed emphasis on awareness training, on how to recognise, disclose and seek help for victims of domestic and sexual violence and abuse, in line with recognised standards.

### **Pursuing Offenders**

1. Pursue perpetrators and reduce re-offending. Police seek to ensure swifter sanctions against perpetrators and intervention opportunities (including perpetrator programmes)

### **Prevention and Early Intervention**

1. Work to prevent domestic abuse by developing a bespoke process for the management of women and girls, both new initiatives and within existing structures. The aim will be to work in a holistic and multi-agency way to divert women and girls from custody
2. Work collaboratively with partners to ensure children are kept safe and receive support at the earliest opportunity (Operation Encompass)

This page is intentionally left blank